

Saamrus Long Walks

Key:

Black line: Farm Boundaries

White lines: Paths for walking

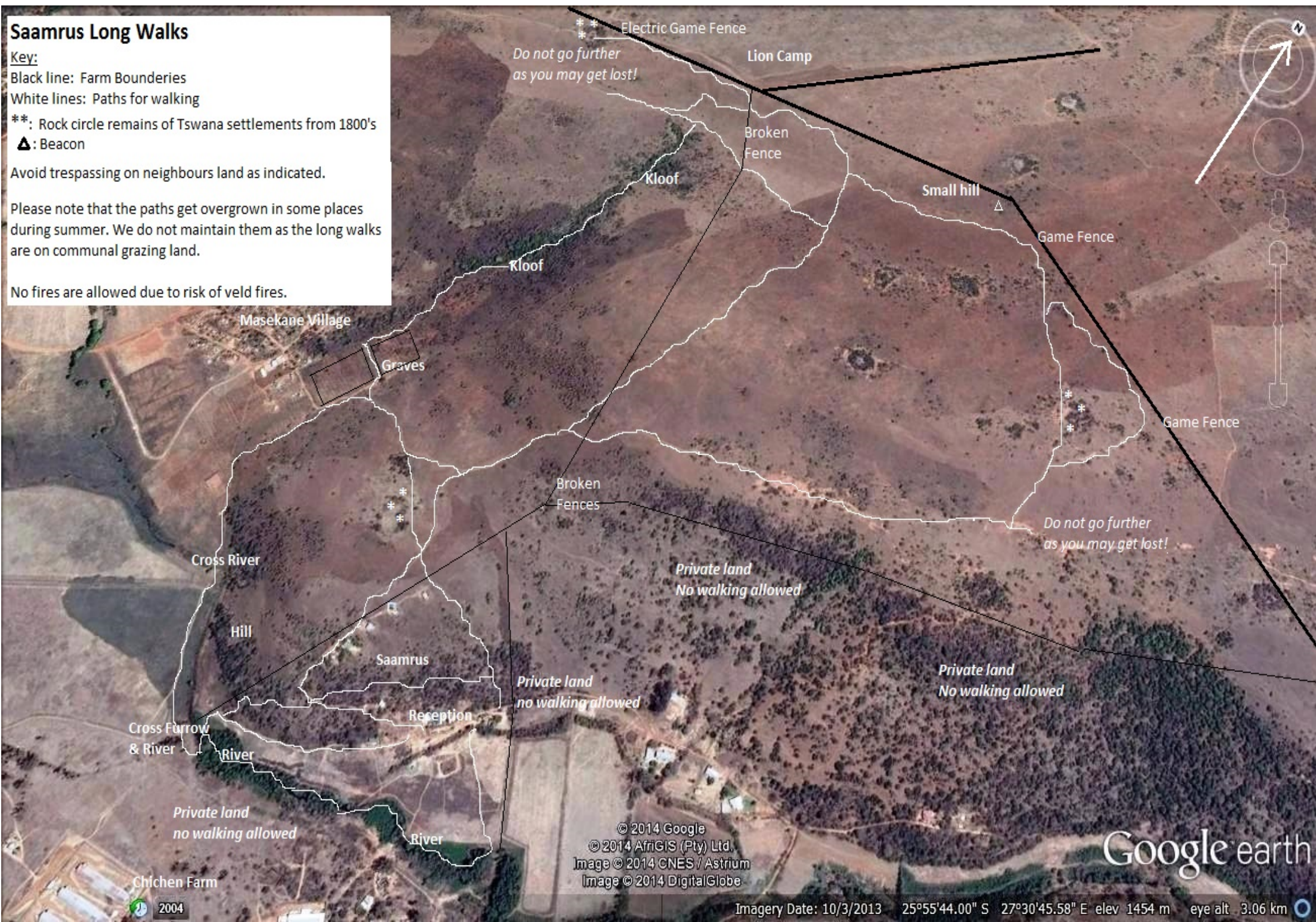
** : Rock circle remains of Tswana settlements from 1800's

▲ : Beacon

Avoid trespassing on neighbours land as indicated.

Please note that the paths get overgrown in some places during summer. We do not maintain them as the long walks are on communal grazing land.

No fires are allowed due to risk of veld fires.



Electric Game Fence
*Do not go further
as you may get lost!*

Lion Camp

Broken
Fence

Kloof

Small hill

Game Fence

Game Fence

*Do not go further
as you may get lost!*

*Private land
No walking allowed*

*Private land
no walking allowed*

*Private land
No walking allowed*

*Private land
no walking allowed*

© 2014 Google
© 2014 AfrigIS (Pty) Ltd.
Image © 2014 CNES / Astrium
Image © 2014 DigitalGlobe

Google earth

Chichen Farm
2004

Imagery Date: 10/3/2013 25°55'44.00" S 27°30'45.58" E elev 1454 m eye alt 3.06 km